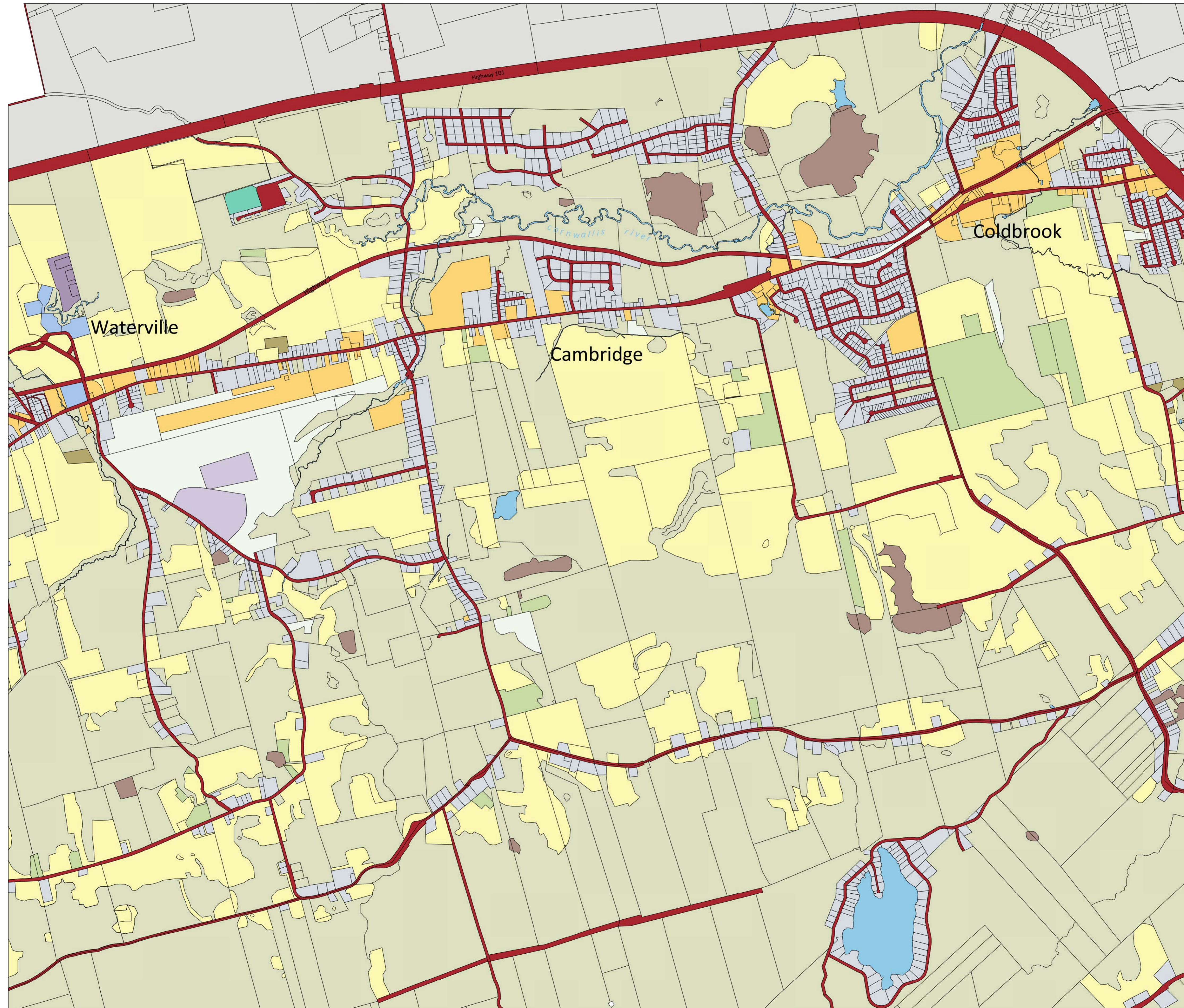


Coldbrook Land Use 2000

Base Map Reproduced with the permission of Service Nova Scotia & Municipal Relations. Land Use information gathered by students from the Planning: Land Information Technology program 2000.



- Adjacent Lands
- Agricultural Site in Transition
- Agriculture
- Forested
- In Transition
- Industrial
- Institutional
- Mining
- Orchard
- Residential
- Roads
- Services
- Sewage
- Sports Field
- Water



This map is produced as a portion of the requirements of Carto1023, Map Graphics. This product is unedited unverified and is intended for student purposes only.

Map produced by Lucy Hughes